



Ombouwset DFGT BLE

Conversion kit DFGT BLE

Umbausatz DFGT BLE

Kit de transformation DFGT BLE

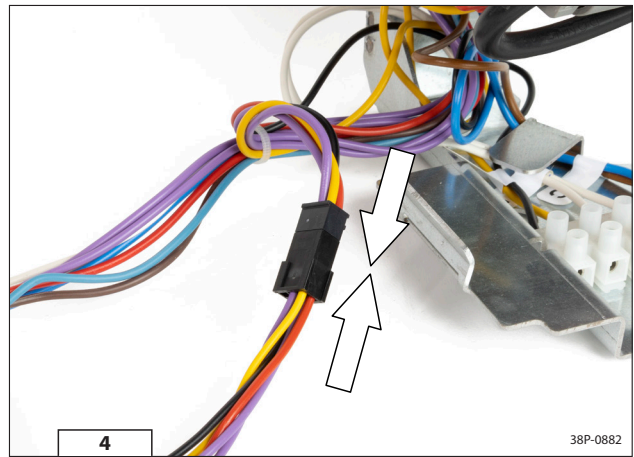
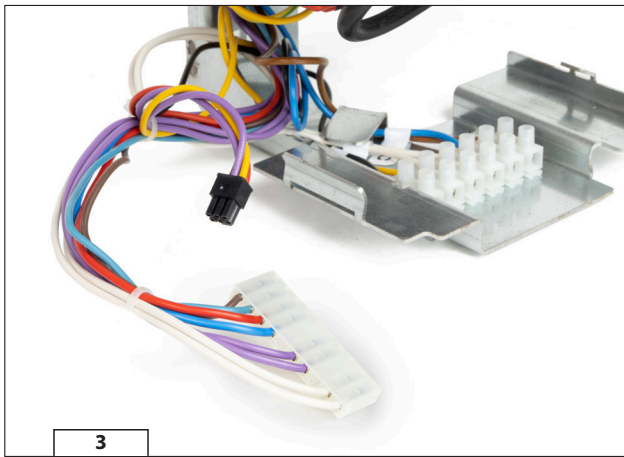
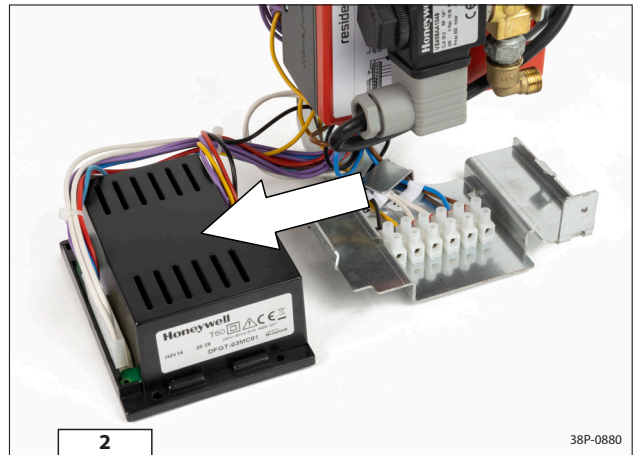
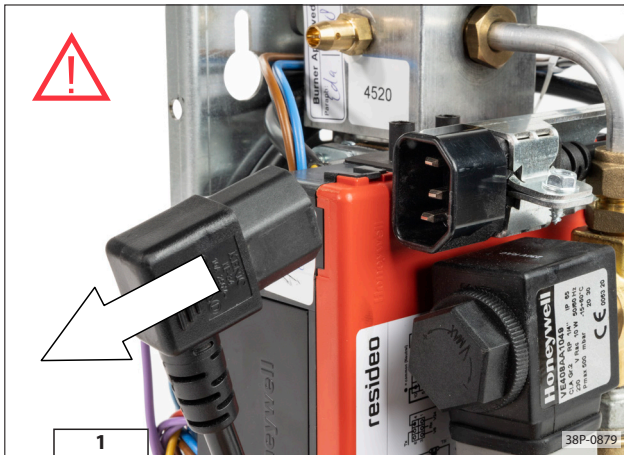


Installatiehandleiding
Instructions for installation
Aufbauanleitung
Instructions d'installation



Volg de instructies in de afbeeldingen nauwgezet.
Please observe the instructions in the figures carefully.
Bitte befolgen Sie die Vorgaben auf den Darstellungen genau.
Suivez strictement les instructions figurant dans les illustrations.





NL - Verplaatsing van contact C (indien van toepassing)

- ⚠ Bij het uitwisselen van de DFGT wordt 'schakelcontact C' een dimbaar contact. Demonteer de aangesloten kabels van de kroonsteen op de toestelregelunit en sluit deze vervolgens aan op de kroonsteen van de verlengkabel (zie afb. 11 & 12).

EN - Relocation of contact C (if applicable)

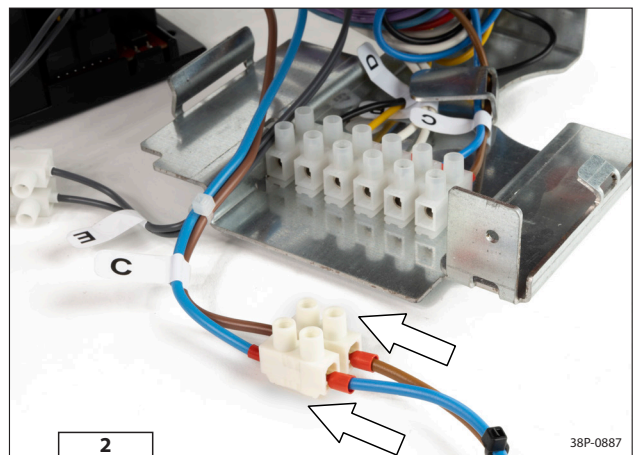
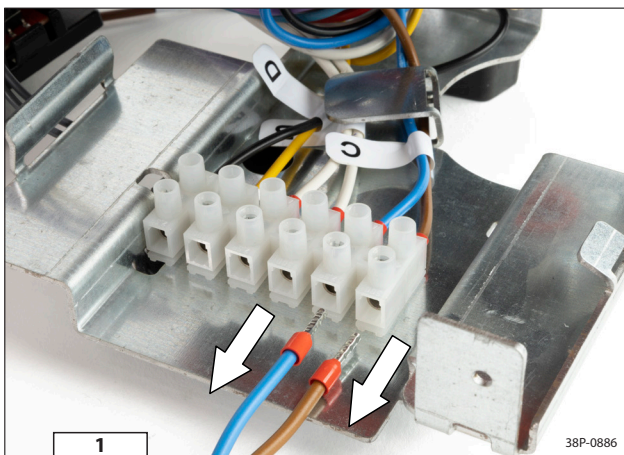
- ⚠ When exchanging the DFGT, 'switch contact C' becomes a dimmable contact. Disassemble the connected cables from the terminal block on the appliance control unit and then connect it to the terminal block of the extension cable (see fig. 11 & 12).

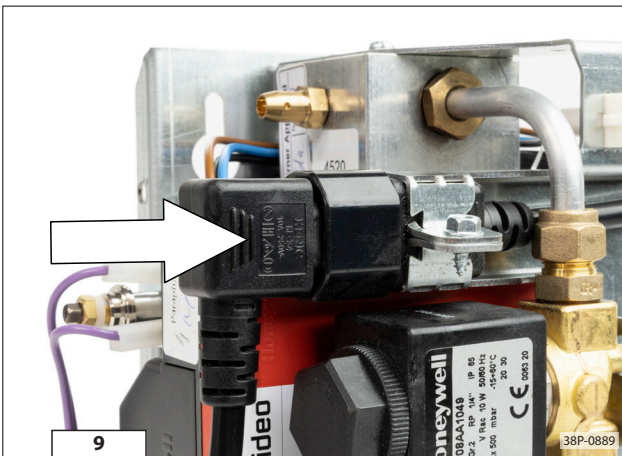
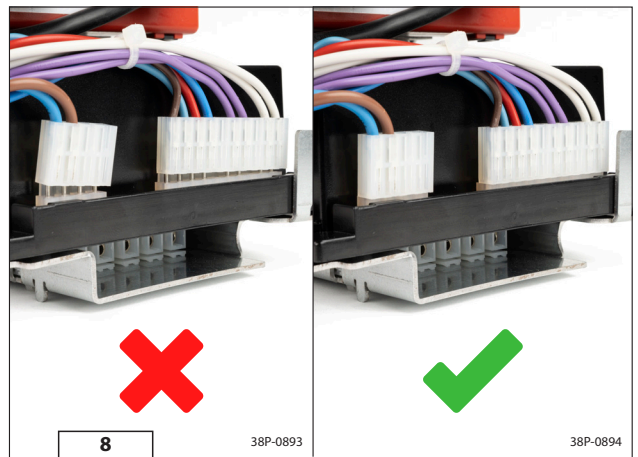
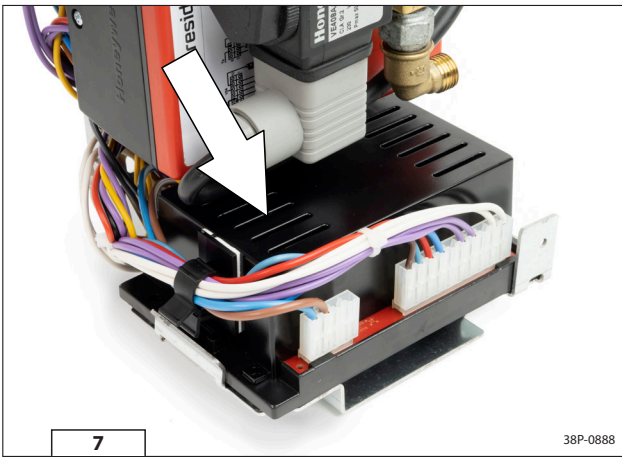
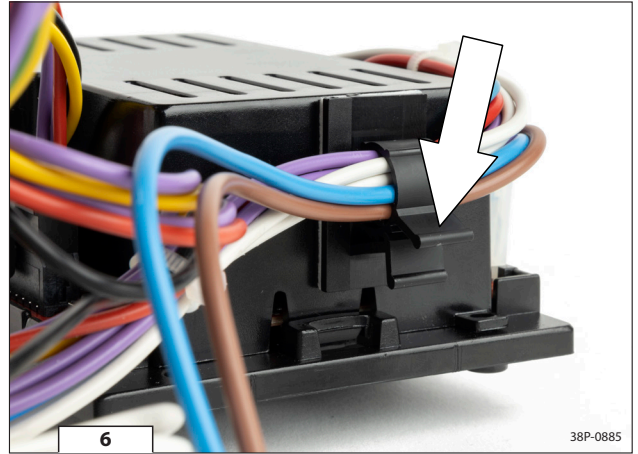
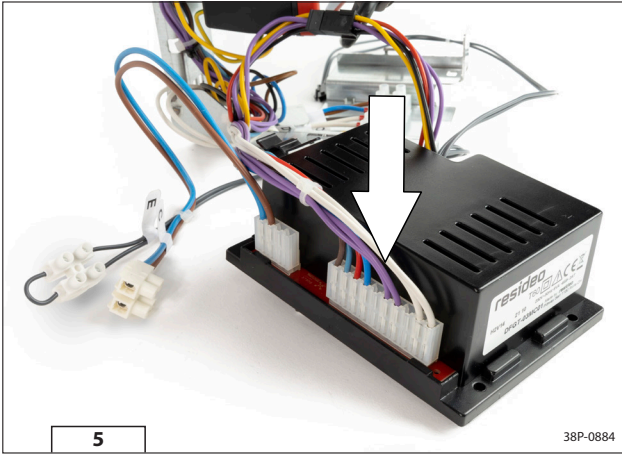
DE - Umzug des Kontakts C (wenn anwendbar)

- ⚠ Beim Austausch des DFGT wird „Schaltkontakt C“ zum dimmbaren Kontakt. Demontieren Sie die angeschlossenen Kabel von der Klemmleiste an der Gerätesteuerung und schließen Sie diese an der Klemmleiste des Verlängerungskabels an (siehe Abb. 11 & 12).

FR - Déplacement du contact C (le cas échéant)

- ⚠ Lors de l'échange du DFGT, le 'contact de commutation C' devient un contact à gradation. Démontez les câbles connectés du bornier de la centrale de l'appareil puis connectez-le au bornier de la rallonge (voir fig. 11 & 12).





NL - Ingebruikname

⚠ Lees voor ingebruikname de meegeleverde gebruikershandleiding.

EN - First use

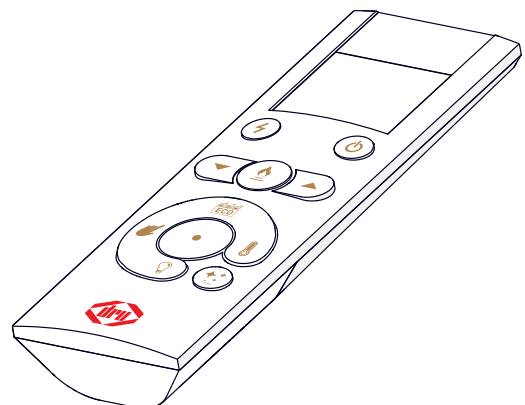
⚠ Read the supplied user manual before use.

DE - Inbetriebnahme

⚠ Lesen Sie vor Gebrauch die mitgelieferte Bedienungsanleitung.

FR - Mise en service

⚠ Lisez le manuel d'utilisation fourni avant utilisation.





DRU Verwarming B.V.
The Netherlands

Postbus 1021, NI-6920 BA Duiven
Ratio 8, NL-6921 RW Duiven
